



Zimmer® Periarticular Distal Lateral Femoral Locking Plate



Plate Features:

- Anatomically contoured plates create a fit that requires little or no additional bending and are helpful for metaphyseal/diaphyseal reduction
- Threaded holes create a 95 degree fixed angle between the plate head and the locking screws to allow screw placement that is parallel to the joint line
- The central locking screw hole in the plate head provides initial reduction of the plate to the condyles
- The low profile plate facilitates fixation without impinging on soft tissues
- Plates are available in a variety of sizes and lengths, from 6 (159mm) to 18 (349mm) holes, left and right
- Dual-compression slots accommodate periarticular screws or conventional stainless steel screws and allow bi-directional compression
- The last diaphyseal plate hole is designed to accommodate the tension device (00-4817-000-05)
- The tapered plate shaft design allows for a minimally invasive technique with submuscular passage of the plate
- Multiple locking holes in the plate head allow placement of the screws to capture fragments
- Thick-to-thin profiles make the plates autocontourable
- The anatomical shape of the head of the plate matches the shape of the distal femur



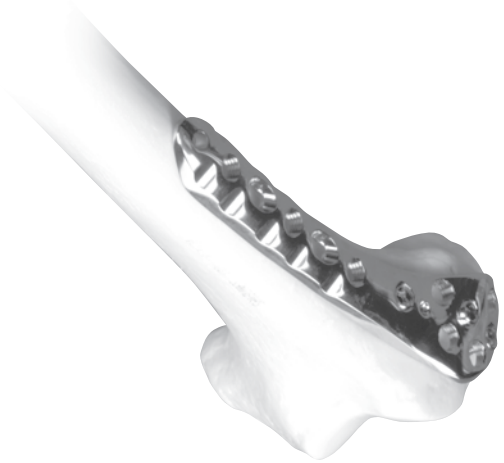
Prod. No. (Left)	Prod. No. (Right)	Description	Holes	Length
5.5mm Distal Lateral Femoral Locking Plates				
00-2357-102-06	00-2357-101-06	Distal Lateral Femoral Locking Plate	6	159mm
00-2357-102-10	00-2357-101-10	Distal Lateral Femoral Locking Plate	10	223mm
00-2357-102-14	00-2357-101-14	Distal Lateral Femoral Locking Plate	14	287mm
00-2357-102-18	00-2357-101-18	Distal Lateral Femoral Locking Plate	18	349mm
47-2357-102-22	47-2357-101-22	Distal Lateral Femoral locking Plate (Sterile)	22	400mm

Designed for use with:

Zimmer 5.5mm/4.5mm Periarticular Locking Screw Set (00-2359-000-01)
 Zimmer 5.5mm/4.5mm Periarticular Locking Instrument Set (00-2360-000-01)
 Zimmer Periarticular Distal Lateral Femoral Plate Standard Jig Set (00-2360-000-11)

Compatible with:

Zimmer Periarticular 4.5mm Self-tapping Cortical Screws
 Zimmer Periarticular 6.5mm Cancellous Screws
 Zimmer Basic Instrument Set (00-4800-045-20)
 Zimmer Standard Screw Set (00-4800-045-01)



Prod. No.	Description	Set Qty.
00-2357-000-13 Periarticular Distal Lateral Femoral Locking Plate Set		
00-2357-102-06	Distal Lateral Femoral Locking Plate, 6 Hole, Left	1
00-2357-102-10	Distal Lateral Femoral Locking Plate, 10 Hole, Left	1
00-2357-102-14	Distal Lateral Femoral Locking Plate, 14 Hole, Left	1
00-2357-102-18	Distal Lateral Femoral Locking Plate, 18 Hole, Left	1
00-2357-101-06	Distal Lateral Femoral Locking Plate, 6 Hole, Right	1
00-2357-101-10	Distal Lateral Femoral Locking Plate, 10 Hole, Right	1
00-2357-101-14	Distal Lateral Femoral Locking Plate, 14 Hole, Right	1
00-2357-101-18	Distal Lateral Femoral Locking Plate, 18 Hole, Right	1

Prod. No.	Description	Set Qty.
00-2360-000-11 Periarticular Distal Lateral Femoral Plate Standard Jig Set		
00-2360-090-01	Distal Lateral Femoral Plate Jig, Right	1
00-2360-090-02	Distal Lateral Femoral Plate Jig, Left	1
00-2358-010-00	Distal Lateral Femoral Plate/Jig Case	1

Prod. No.	Description	Set Qty.
00-2360-000-01 5.5mm/4.5mm Periarticular Locking Instrument Set		
00-1147-073-00	Cleaning Stylet	1
00-1147-078-00	Cleaning Brush	1
00-2358-035-00	5.5mm/4.5mm Locking Screw and Instrument Case	1
00-2360-012-01	5.5mm/4.5mm Plate Reduction Instrument	2
00-2360-012-02	5.5mm/4.5mm Plate Reduction Sleeve	2
00-2360-012-03	Plate Reduction Spin Knob	2
00-2360-020-37	3.7mm Standard Cannula	4
00-2360-021-32	3.2mm Standard Cannula	4
00-2360-033-32	3.2mm Standard Drill Tip Guide Wire (5 per box)	2 bx
00-2360-040-45	4.5mm Locking Screw Standard Depth Gauge	1
00-2360-041-55	5.5mm Cannulated Locking Screw Depth Gauge	1
00-2360-053-45	4.5mm Locking Screw Tap	2
00-2360-054-55	5.5mm Cannulated Locking Screw Tap	2
00-2360-065-05	5.0mm Screwdriver Stop Ring	1 bx
00-2360-165-50	5.0mm Hex Standard Screwdriver	2
00-2360-166-50	5.0mm Hex Standard Cannulated Screwdriver	2
00-2360-071-47	4.7mm Standard Cannulated Drill	2
00-2360-080-05	Torque Limiting Attachment	1
00-2360-085-00	Guide Wire Insertor	1
00-2360-186-00	Modular Handle	1
00-2360-087-00	Ratcheting Modular Handle	1
00-2360-088-00	5.5mm/4.5mm Cannula Insertor	1
00-2360-090-04	5.5mm/4.5mm Standard Jig Sleeve	4
00-2360-225-37	3.7mm Standard Drill	2
00-4812-045-00	3.5mm Hex Screwdriver	0

Prod. No.	Description	Set Qty.
00-2359-000-01 5.5mm/4.5mm Locking Screw Set		
00-2359-030-55	5.5mm Cannulated Locking Screw 30mm Lng	2
00-2359-035-55	5.5mm Cannulated Locking Screw 35mm Lng	2
00-2359-040-55	5.5mm Cannulated Locking Screw 40mm Lng	2
00-2359-045-55	5.5mm Cannulated Locking Screw 45mm Lng	2
00-2359-050-55	5.5mm Cannulated Locking Screw 50mm Lng	4
00-2359-055-55	5.5mm Cannulated Locking Screw 55mm Lng	4
00-2359-060-55	5.5mm Cannulated Locking Screw 60mm Lng	4
00-2359-065-55	5.5mm Cannulated Locking Screw 65mm Lng	4
00-2359-070-55	5.5mm Cannulated Locking Screw 70mm Lng	4
00-2359-075-55	5.5mm Cannulated Locking Screw 75mm Lng	4
00-2359-080-55	5.5mm Cannulated Locking Screw 80mm Lng	4
00-2359-085-55	5.5mm Cannulated Locking Screw 85mm Lng	4
00-2359-090-55	5.5mm Cannulated Locking Screw 90mm Lng	2
00-2359-095-55	5.5mm Cannulated Locking Screw 95mm Lng	2
00-2359-100-55	5.5mm Cannulated Locking Screw 100mm Lng	2
00-2359-050-56	5.5mm Cannulated Conical Screw 50mm Lng	2
00-2359-055-56	5.5mm Cannulated Conical Screw 55mm Lng	2
00-2359-060-56	5.5mm Cannulated Conical Screw 60mm Lng	2
00-2359-065-56	5.5mm Cannulated Conical Screw 65mm Lng	2
00-2359-070-56	5.5mm Cannulated Conical Screw 70mm Lng	2
00-2359-075-56	5.5mm Cannulated Conical Screw 75mm Lng	2
00-2359-080-56	5.5mm Cannulated Conical Screw 80mm Lng	2
00-2359-085-56	5.5mm Cannulated Conical Screw 85mm Lng	2
00-2359-090-56	5.5mm Cannulated Conical Screw 90mm Lng	2
00-2359-012-45	4.5mm Locking Screw 12mm long	2
00-2359-014-45	4.5mm Locking Screw 14mm long	2
00-2359-016-45	4.5mm Locking Screw 16mm long	2
00-2359-018-45	4.5mm Locking Screw 18mm long	2
00-2359-020-45	4.5mm Locking Screw 20mm long	2
00-2359-022-45	4.5mm Locking Screw 22mm long	2
00-2359-024-45	4.5mm Locking Screw 24mm long	2
00-2359-026-45	4.5mm Locking Screw 26mm long	2
00-2359-028-45	4.5mm Locking Screw 28mm long	4
00-2359-030-45	4.5mm Locking Screw 30mm long	4
00-2359-032-45	4.5mm Locking Screw 32mm long	4
00-2359-034-45	4.5mm Locking Screw 34mm long	4
00-2359-036-45	4.5mm Locking Screw 36mm long	4
00-2359-038-45	4.5mm Locking Screw 38mm long	4
00-2359-040-45	4.5mm Locking Screw 40mm long	4
00-2359-042-45	4.5mm Locking Screw 42mm long	4
00-2359-044-45	4.5mm Locking Screw 44mm long	4
00-2359-046-45	4.5mm Locking Screw 46mm long	4
00-2359-048-45	4.5mm Locking Screw 48mm long	4
00-2359-050-45	4.5mm Locking Screw 50mm long	4
00-2359-055-45	4.5mm Locking Screw 55mm long	4
00-2359-060-45	4.5mm Locking Screw 60mm long	2
00-2359-065-45	4.5mm Locking Screw 65mm long	2
00-2359-070-45	4.5mm Locking Screw 70mm long	2



97-2347-105-00 0903-T03 2ML Printed in USA ©2005, 2008, 2009 Zimmer, Inc.

Contact your Zimmer representative or visit us at www.zimmer.com

